

BELLOW SEALED STOP VALVE zBEL



Body material	Nominal pressure	Nominal diameter	Max. temperature
F Cast steel	E 40 bar	DN 15-200	450°C
I Cast stainless steel	E 40 bar	DN 15-200	400°C

correspond to the pressure equipment directive 2014/68/UE marking CE for DN≥32



FEATURES

- high tightness (leakproofness class - A acc. to EN - 12266 - 1
- compact settlement
- environment friendly
- tests acc. to EN - 12266 - 1
- face-to-face dimension according to EN 558 series 1
- weld ends according to EN 12627

APPLICATION *

* not all of the applications are suitable for all of the executions
 On the website www.zetkama.com.pl is a Chemical Resistance List, which specifies the parameters of work for a given medium.

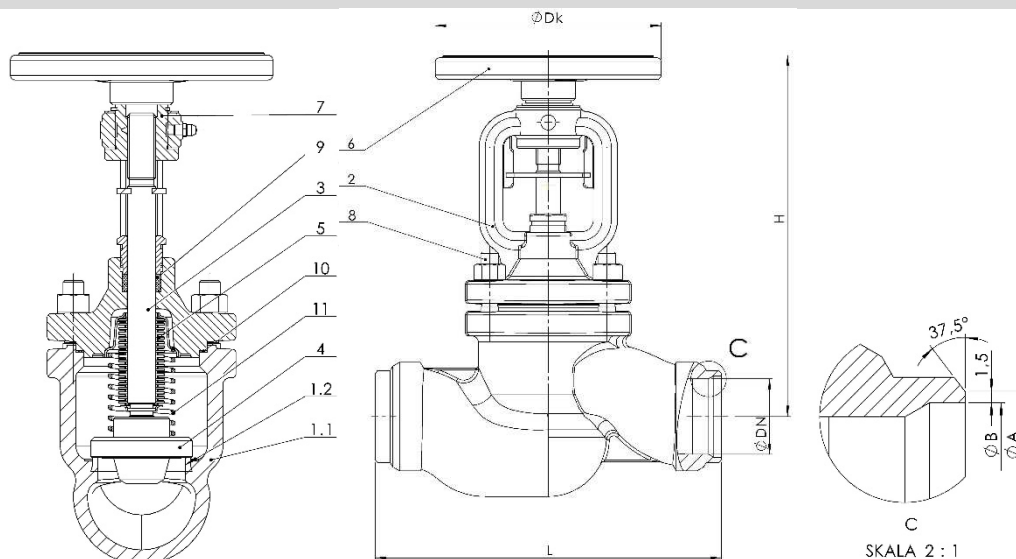
industries							
	INDUSTRY	SHIPBUILDING INDUSTRY	HEATING	REFRIGERATION AND AIR CONDITIONING	CHEMICAL INDUSTRY		
media							
	GLYCOL	INDUSTRIAL WATER	DIATHERMIC OIL	STEAM	COMPRESSED AIR	NEUTRAL FLUIDS	HYDROGEN

Data given can be changed without notice.

Edition 10/2023

FIG.237

MATERIALS, DIMENSIONS



	Body material	F		I	
		01; 04 71	31	01; 04 71	31
1.1	Body	GP240GH 1.0619		G-X5CrNiMo19-11-2 1.4408	
1.2	Seat	G199 LSi		G199 LSi	
2	Bonnet	GP240GH 1.0619		G-X5CrNiMo19-11-2 1.4408	
3	Stem	X20Cr13 1.4021		X6CrNiMoTi17-12-2 1.4571	
4	Disc	X20Cr13 1.4021		X6CrNiMoTi17-12-2 1.4571	
5	Bellow	X6CrNiMoTi17-12-2 1.4571			
6	Hand-wheel	Steel			
7	Stud bolt	25CrMo4		A4-70	
8	Nut	25CrMo4		A4	
9	Gland packing	Graphite			
10	Gasket	Graphite			
11	Spring	----	X17CrNi16-2	----	X17CrNi16-2
Max. temperature		450°C		400°C	

DN	15	20	25	32	40	50	65	80	100	125	150	200
L (mm)	130	150	160	180	200	230	290	310	350	400	480	600
Dk (mm)	125	125	125	125	200	200	250	250	300	300	400	500
H	190	190	190	195	240	240	270	300	450	520	570	627
A (mm)	22	28	35	44	50	61	77	91	117	144	157,1	223
B (mm)	17,3	22,3	28,5	37,2	43,1	54	68,9	80,9	104,3	130,7	172	204,9
Kvs (m³/h)	5,3	8,4	12,3	22	29	44	74,8	111,5	182	232,5	337,5	1078
Weight (kg)	3,0	3,5	3,8	4	7,9	8,1	15,1	20,4	34,7	53,8	77	139

Data given can be changed without notice.

Edition 10/2023

ZETKAMA Sp. z o.o.
Ul. 3 Maja 12
PL 57-410 Ścinawka Średnia

Tel. +48 74 8652 193
Tel. +48 74 8652 111
Fax +48 74 8652 199

E-mail export@zetkama.com.pl
www.zetkama.com

KV [m³/h] FIG. 237-71 (F, I)

Turn	DN 15	DN 20	DN 25	DN 32	DN 40	DN 50	DN 65	DN 80	DN 100	DN 125	DN 150	DN 200
0,5	0,34	1,05	1,46	1,77	4,1	3,7	5,3	5,2	10,6	15,7	11,1	48
1	0,83	2,03	1,83	2,38	5,9	4,5	5,6	6,9	16,6	22,6	36,5	70
1,5	1,95	3,07	2,98	3,66	7,9	5,5	6,0	8,4	24,9	28,7	48	85
2	2,87	4,55	4,3	5,1	9,6	7,6	7,8	10,0	36,3	37,1	56	96
2,5	3,7	5,8	6,0	6,9	11,5	9,8	9,9	12,4	50	50	64	106
3	4,3	6,5	7,5	9,0	13,9	11,9	12,7	14,7	65	66	72	117
3,5			8,9	10,7	16,0	14,9	15,7	17,5	82	86	80	127
4			10,3	12,7	18,9	18,0	19,2	20,8	100	105	92	138
4,5			11,0	13,7	21,6	22,8	22,7	24,3	117	128	107	161
5					24,4	26,5	26,4	28,1	133	152	133	181
5,5					27,0	30,1	30,9	32,4	146	174	164	225
6					29,5	33,6	35,7	37,2		195	199	263
6,5					31,4	37,4	41	43		212	235	321
7					32,5	40,0	46	49		225	269	367
7,5							52	55			301	419
8							57	62			329	460
8,5							62	68				493
9							67	75				515
9,5												532

PRESSURE-TEMPERATURE RATINGS

Acc. EN 1092-1	PN		-40 ^o ÷<-10 ^o C	-10 ^o C÷100 ^o C	100 ^o C	150 ^o C	200 ^o C	250 ^o C	300 ^o C	350 ^o C	400 ^o C	450 ^o C
GP240GH	40	bar	30	40	37,1	35,2	33,3	30,4	27,6	25,7	23,8	13,1
Acc. EN 1092-1			-60 ^o ÷<-10 ^o C	-10 ^o C÷100 ^o C		150 ^o C	200 ^o C	250 ^o C	300 ^o C	350 ^o C	400 ^o C	450 ^o C
G-X5CrNiMo19-11-2	40		40	40		36,3	33,7	31,8	29,7	28,5	27,4	---

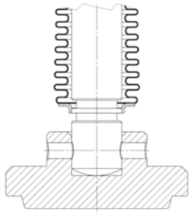
Data given can be changed without notice.

Edition 10/2023

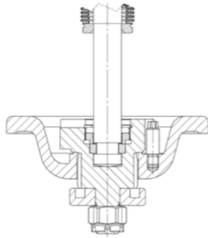
FIG.237

DISC

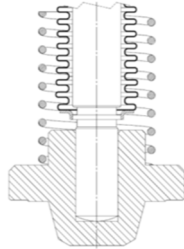
type 01



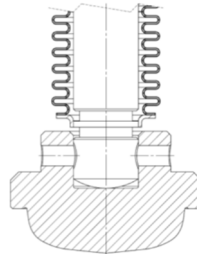
type 04



type 31



type 71



Other type of valves on request:

- stellite seat
- hardened disc
- other

TYPE

Figure	Body material	Nominal diameter	Nominal pressure	Type
237	F Cast steel GP240GH	15-100 mm	E 40 bar	stop valve; seat - stainless steel 01
		125-200 mm	E 40 bar	stop valve; balancing disc; seat - stainless steel 04
		15-200 mm	E 40 bar	stop check valve; seat - stainless steel 31
		15-200 mm	E 40 bar	stop valve; throttling disc, seat - stainless steel 71
237	I Cast stainless steel G-X5CrNiMo19-11-2	15-100 mm	E 40 bar	stop valve; seat - stainless steel 01
		125-200 mm	E 40 bar	stop valve; balancing disc; seat - stainless steel 04
		15-200 mm	E 40 bar	stop check valve; seat - stainless steel 31
		15-200 mm	E 40 bar	stop valve; throttling disc, seat - stainless steel 71
		15-100 mm	E 40 bar	stop valve; seat - stainless steel; , type for hydrogen 01-H
		125-200 mm	E 40 bar	stop valve; balancing disc; seat - stainless steel; , type for hydrogen 04-H
		15-200 mm	E 40 bar	stop check valve; seat - stainless steel; , type for hydrogen 31-H
		15-200 mm	E 40 bar	stop valve; throttling disc, seat - stainless steel; , type for hydrogen 71-H

Data given can be changed without notice.

Edition 10/2023

FIG.237

ORDERING

Figure	Body material	Nominal diameter	Nominal pressure	Type
237	F Cast steel GP240GH	15-100 mm	E 40 bar	stop valve; seat - stainless steel 01

Order example acc. index

237 F 050 E 01

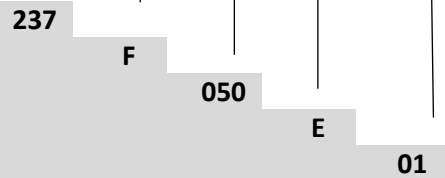
Bellow valve, ends welded, form straight

Cast steel GP240GH

Nominal diameter (mm)

Nominal pressure PN 40

Stop valve; seat - stainless steel



Data given can be changed without notice.

Edition 10/2023