

GATE VALVE zGAT



Body material	Nominal pressure	Nominal diameter	Max. temperature
G Cast steel	E 40 bar F 63 bar G 100 bar	DN 15-50	425°C
M Stainless steel	E 40 bar F 63 bar G 100 bar	DN 15-50	400°C



correspond to the pressure equipment directive 2014/68/UE marking CE for DN≥32

FEATURES

- high tightness (leakproofness class - A acc. to EN - 12266 – 1)
- compact settlement
- environment friendly
- tests acc. to EN - 12266 – 1
- flanges drilled according to EN 1092-1

APPLICATION *

* not all of the applications are suitable for all of the executions

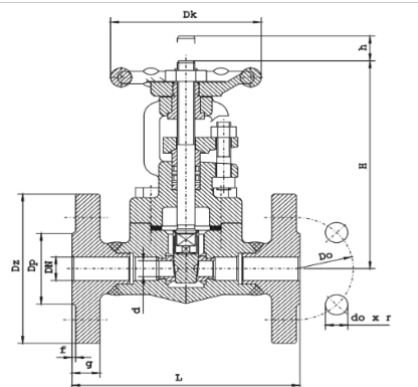
On the website www.zetkama.com.pl is a Chemical Resistance List, which specifies the parameters of work for a given medium.

industries						
	INDUSTRY	SHIPBUILDING INDUSTRY	HEATING	REFRIGERATION AND AIR CONDITIONING	POWER ENGINEERING	CHEMICAL INDUSTRY
media						
	GLYCOL	INDUSTRIAL WATER	DIATHERMIC OIL	STEAM	COMPRESSED AIR	NEUTRAL FLUIDS

Data given can be changed without notice.

Edition 01/2020

MATERIALS, DIMENSIONS



	Body material	G	M
	Type	01	01
	PN	40, 63, 100 bar	
1	Body	A105	A182/F316
2	Seat ring	X17CrNi16-2	A479/316L
3	Bonnet	A105	A182/F316
4	Wedge	X20Cr13	A479/316L
5	Stem	X20Cr13	A479/316L
6	Gasket	graphite	
Max. temperature		425°C	400°C

DN	PN	15	20	25	32	40	50	
Dz(mm)	40	95	105	115	140	150	165	
Dp(mm)		45	58	68	78	88	102	
Do(mm)		65	75	85	100	110	125	
d(mm)		10	13	18	29	29	36	
doxn		14x4	14x4	14x4	18x4	18x4	18x4	
L(mm)		130	150	160	180	240	250	
F (mm)		2	2	2	2	2	2	
g (mm)		16	18	18	18	18	20	
H (mm)		166	170	174	231	231	242	
Dk (mm)		80	80	100	180	180	180	
Weight (kg)		3,4	4,3	6,2	12,0	17,2	22,0	
Dz(mm)		63	105	130	140	155	170	180
Dp(mm)			45	58	68	78	88	102
Do(mm)	75		90	100	110	125	135	
d(mm)	12		18	22	29	29	36	
doxn	14x4		18x4	18x4	22x4	22x4	22x4	
L(mm)	210		230	230	180	240	250	
F (mm)	2		2	2	2	2	2	
g (mm)	20		22	24	24	26	28	
H (mm)	166		170	174	231	231	242	
Dk (mm)	80		80	100	180	180	180	
Ciężar (kg)	5,4		6,5	9,1	13,3	25,3	31,1	
Dz(mm)			105	130	140	155	170	195
Dp(mm)			45	58	68	78	88	102

Data given can be changed without notice.

Edition 01/2020

FIG.119 (ex. ZKK 40, ZKK 100)

Do(mm)	100	75	90	100	110	125	145
d(mm)		12	18	22	29	29	36
doxn		14x4	18x4	18x4	22x4	22x4	26x4
L(mm)		210	230	230	180	240	250
F (mm)		2	2	2	2	2	2
g (mm)		20	22	24	24	26	28
H (mm)		166	170	174	231	231	242
Dk (mm)		80	80	100	180	180	180
Weight (kg)		5,4	6,5	9,1	13,3	25,3	31,1

PRESSURE-TEMPERATURE RATINGS

PN		-29-100°C	150°C	200°C	250°C	300°C	350°C	400°C	425°C
40	bar	40	35,7	31,4	29,4	25,9	22,8	18	14,3
63		63	55,5	52,5	48,0	43,5	40,5	37,5	30,0
100		100	89	78	74	65	57	45	36

Other type of valves on request.

TYPE

Figure	Body material	Nominal diameter	Nominal pressure	Type
119	G Cast steel A105	15-50 mm	E 40 bar	Steel wedge, steel ring 01
		15-50 mm	F 63 bar	Steel wedge, steel ring 01
		15-50 mm	G 100 bar	Steel wedge, steel ring 01
119	M stainless steel A182/F316	15-50 mm	E 40 bar	Steel wedge, steel ring 01
		15-50 mm	F 63 bar	Steel wedge, steel ring 01
		15-50 mm	G 100 bar	Steel wedge, steel ring 01

Data given can be changed without notice.

Edition 01/2020

ORDERING

Figure	Body material	Nominal diameter	Nominal pressure	Type
119	G cast steel A105	15-50 mm	E 40 bar	Steel wedge, steel ring 01

Order example acc. index

119 G 050 E 01

Gate valve, ends flanged, form straight
 Cast steel A105
 Nominal diameter (mm)
 Nominal pressure PN 40
 Steel wedge, steel ring

119
 G
 050
 E
 01

Data given can be changed without notice.

Edition 01/2020