

STOP VALVE zGLO



Body material	Nominal pressure	Nominal diameter	Max. temperature
G Forged steel	E 40 bar	DN 15-50	450°C
F Cast steel	E 40 bar	DN 15-300	450°C
I Cast stainless Steel	E 40 bar	DN 15-300	400°C



correspond to the pressure equipment directive 2014/68/UE marking CE for DN≥32

**FEATURES**

- high tightness (leakproofness class - A acc. to EN - 12266 - 1
- compact settlement
- environment friendly
- tests acc. to EN - 12266 - 1
- face-to-face dimension according to EN 558 series 1
- weld ends according to EN 12627

**APPLICATION \***

\*not all of the applications are suitable for all of the executions

On the website [www.zetkama.com.pl](http://www.zetkama.com.pl) is a Chemical Resistance List, which specifies the parameters of work for a given medium

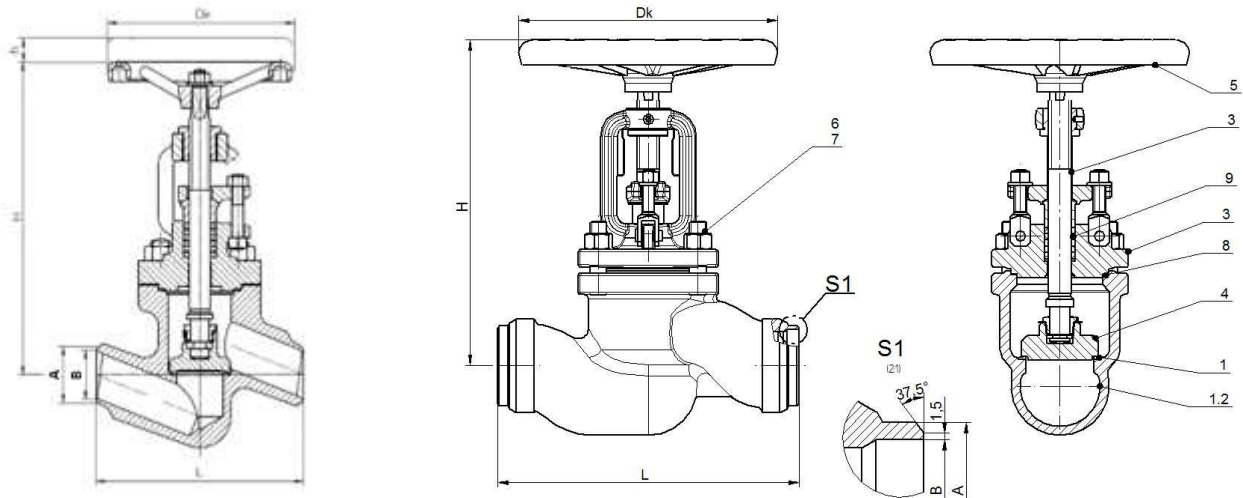
industries						
	INDUSTRY	SHIPBUILDING INDUSTRY	HEATING	REFRIGERATION AND AIR CONDITIONING	CHEMICAL INDUSTRY	
media						
	GLYCOL	INDUSTRIAL WATER	DIATHERMIC OIL	STEAM	COMPRESSED AIR	NEUTRAL FLUIDS

Data given can be changed without notice.

Edition 01/2018

FIG.217

MATERIALS, DIMENSIONS



	Body material	G		F		I		
		00	00 01 04 71	31	00 01 04 71	31		
1	Body	P245GH 1.0352		GP240GH 1.0619		GX5CrNiMO19-11-2 1.4408		
1.2	Padding weld	G 19 9 LSi		G 19 9 LSi		G 19 9 LSi		
2	Bonnet	P245GH 1.0352		GP240GH 1.0619		GX5CrNiMO19-11-2 1.4408		
3	Stem	X20Cr13 1.4021		X20Cr13 1.4021		X6CrNiMoTi17-12-2 1.4571		
4	Disc	X20Cr13 1.4021		X20Cr13 1.4021		X6CrNiMoTi17-12-2 1.4571		
5	Hand-wheel	KOZ-120 PN-M-74203						
6	Stud bolt	25CrMo4				A4-70		
7	Nut	25CrMo4				A4		
8	Bonnet gasket	SPETOGRAF GUS 40						
9	Gland packing	GRAFMET 950						
10	Spring	-----		X17CrNi16-2		----- X17CrNi16-2		
<b>Max. temperature</b>		<b>450°C</b>						<b>400°C</b>

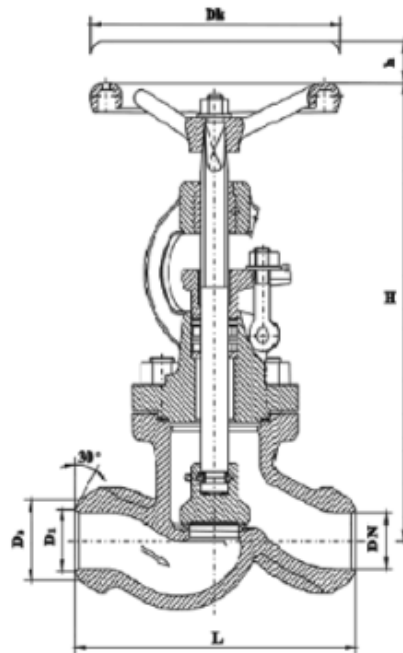
DN	15	20	25	32	40	50	15	20	25	32	40	50	65	80	100	125	150	200	
<b>Material</b>	<b>G</b>						<b>F, I</b>												
<b>L (mm)</b>	130	130	130	160	180	210	130	150	160	180	200	230	290	310	350	400	480	600	
<b>Dk (mm)</b>	120	120	120	160	160	160	120	120	120	120	180	180	250	250	320	320	360	500	
<b>H</b>	190	190	190	260	270	270	235	235	235	235	275	275	315	350	435	470	510	625	
<b>A (mm)</b>	22	28	35	44	50	62	22	28	35	44	50	61	77	91	117	144	172	223	
<b>B (mm)</b>	17,3	22,3	28,5	37,2	43	54	17,3	22,3	28,5	37,2	43,1	54	68,9	80,9	104,3	130,7	157,1	204,9	
<b>k<sub>vs</sub> (m<sup>3</sup>/h)</b>	4	6,3	10	16	25	40	5,3	8,4	12,3	22,0	29,0	44,0	74,8	111,5	182,0	232,5	337,5	1078	
<b>Weight (kg)</b>	2,2	2,8	3,3	7,2	8	12,4	3,7	3,9	4,3	4,8	9,0	9,9	16,5	21,8	37,6	52,8	78	139,2	
<b>Pipe to welding</b>	<b>d</b>	21,3	26,9	33,7	42,4	48,3	60,3	21,3	26,9	33,7	42,4	48,3	60,3	76,1	88,9	114,3	139,7	168,3	219,1
	<b>s</b>	2	2,3	2,6	2,6	2,6	3,2	2	2,3	2,6	2,6	2,6	3,2	3,6	4	5	4,5	5,6	7,1

Data given can be changed without notice.

Edition 01/2018

FIG.217

DN 250-300



	Body material	F	I
	Type	04	04
1	Body	GP240GH	GX5CrNiMo19-11-2
2	Seat	18-8 Cr-Ni	GX5CrNiMo19-11-2
3	Bonnet	GP240GH	GX5CrNiMo19-11-2
4	Stem	X20Cr13	X6CrNiMoTi17-12-2
5	Disc	CS+18-8 Cr-Ni	X6CrNiTi18-10
6	Gasket	Graphite	Graphite
<b>Max. temperature</b>		<b>450°C</b>	<b>400°C</b>

DN	250	300
D1 (mm)	257	308
D2 (mm)	278	329
L	730	850
H	665	777
h	110	160
Dk	500	640
Weight (kg)	275	450

Data given can be changed without notice.

Edition 01/2018

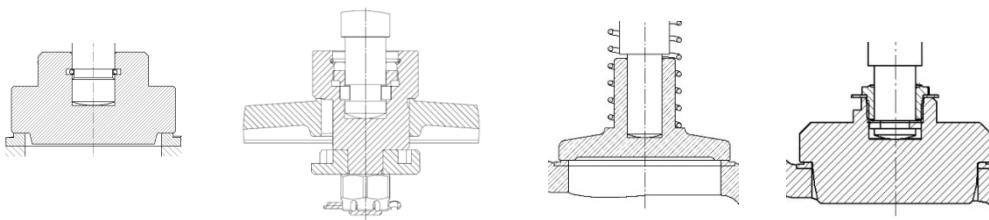
**PRESSURE-TEMPERATURE RATINGS**

Acc. EN 1092-1	PN		-20°±<-10°C	-10°±<-50°C	-100°C	150°C	200°C	250°C	300°C	350°C	400°C	450°C
GP240GH +N	40	bar	30	40	37,1	35,2	33,3	30,4	27,6	25,7	23,8	13,1
Acc. EN 1092-1			-60°±<-10°C		-10°C±100°C	150°C	200°C	250°C	300°C	350°C	400°C	450°C
G-X5CrNiMo19-11-2	40		40		40	36,3	33,7	31,8	29,7	28,5	27,4	---

**KV [m³/h] FIG. 217-71**

Turn	DN 15	DN 20	DN 25	DN 32	DN 40	DN 50	DN 65	DN 80	DN 100	DN 125	DN 150	DN 200
0,5	0,22	0,42	0,60	0,77	1,0	2,1	2,3	3,6	5	10		
1	0,30	0,52	0,85	1,14	1,5	2,5	3,3	5,7	7	14	38,7	61,3
2	0,68	1,05	1,65	2,2	3,5	4,4	8,1	13,6	13,5	22	60,5	90
3	1,3	1,9	3,0	3,8	6,3	8,1	17	21,4	22	32	81,4	112
4	2,3	3,4	7,6	7,6	14	15,7	44,3	41,5	33,5	47	117,7	131,4
5	4,8	6,9	13,6	15,1	28	33,1	74,7	81,4	75,5	96	182,5	168,5
5,5	6,1	8,6		19		45,1						
6								112	116	151	252	241,3
7									148	198	290,7	335,9
8										228		422,5
8,5												458,6
9										246		

**DISCS**



Type 00

type 04

type 31

type 71

Other type of valves on request:

- stellited seat
- hardened disc
- other

Data given can be changed without notice.

Edition 01/2018

**TYPE**

Figure	Body material	Nominal diameter	Nominal pressure	Type
217	G Forged steel P245GH	15-50 mm	E 40 bar	00 stop valve; stem and disc connection - fixed; seat - stainless steel
217	F Cast steel GP240GH	15-100 mm	E 40 bar	01 stop valve; stem and disc connection - separable; seat - stainless steel
		15-32 mm	E 40 bar	00 stop valve; stem and disc connection - fixed; seat - stainless steel
		125-300 mm	E 40 bar	04 stop valve; balancing disc; seat - stainless steel
		15-200 mm	E 40 bar	31 stop-check valve; seat - stainless steel
		15-200 mm	E 40 bar	71 stop valve, throttling disc, seat - stainless steel
217	I Cast stainless steel G-X5CrNiMo19- 11-2	15-100 mm	E 40 bar	01 stop valve; stem and disc connection - separable; seat - stainless steel
		15-32 mm	E 40 bar	00 stop valve; stem and disc connection - fixed; seat - stainless steel
		125-300 mm	E 40 bar	04 stop valve; balancing disc; seat - stainless steel
		15-200 mm	E 40 bar	31 stop-check valve; seat - stainless steel
		15-200 mm	E 40 bar	71 stop valve, throttling disc, seat - stainless steel

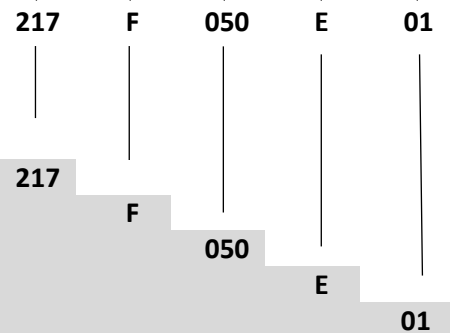
Data given can be changed without notice.

Edition 01/2018

**ORDERING**

Figure	Body material	Nominal diameter	Nominal pressure	Type
217	F Cast steel GP240GH	15-100 mm	E 40 bar	01 stop valve; stem and disc connection - separable; seat - stainless steel

**Order example acc. index**



217	Stop valve, ends welded, form straight
F	Cast steel GP240GH
050	Nominal diameter (mm)
E	Nominal pressure PN 40
01	Stop valve; stem and disc connection - separable; seat - stainless steel

Data given can be changed without notice.

Edition 01/2018