

CHECK VALVE zFAG



Body material	Nominal pressure	Nominal diameter	Max. temperature
<b>G</b> Forged steel	H 160 bar G 100 bar F 63 bar	DN 15-50 DN 15-25 DN 15-25	450°C
<b>F</b> Cast steel	H 160 bar G 100 bar F 63 bar	DN 65-200 DN 32-200 DN 32-200	450°C
<b>Q</b> Alloy steel	H 160 bar G 100 bar F 63 bar	DN 15-200	550°C



correspond to the pressure equipment directive 2014/68/UE marking CE for DN≥32

**FEATURES**

- closing tightness class D acc. to EN -12266-1
- compact settlement
- environment-friendly
- tests acc. to EN - 12266 – 1
- flanges drilled according to EN 1092-1

**APPLICATION \***

\* not all of the applications are suitable for all of the executions  
 On the website [www.zetkama.com.pl](http://www.zetkama.com.pl) is a Chemical Resistance List, which specifies the parameters of work for a given medium

industries



INDUSTRY



SHIPBUILDING  
INDUSTRY



HEATING



REFRIGERATION  
AND AIR  
CONDITIONING

media



GLYCOL



INDUSTRIAL  
WATER



DIATHERMIC OIL



STEAM



COMPRESSED  
AIR

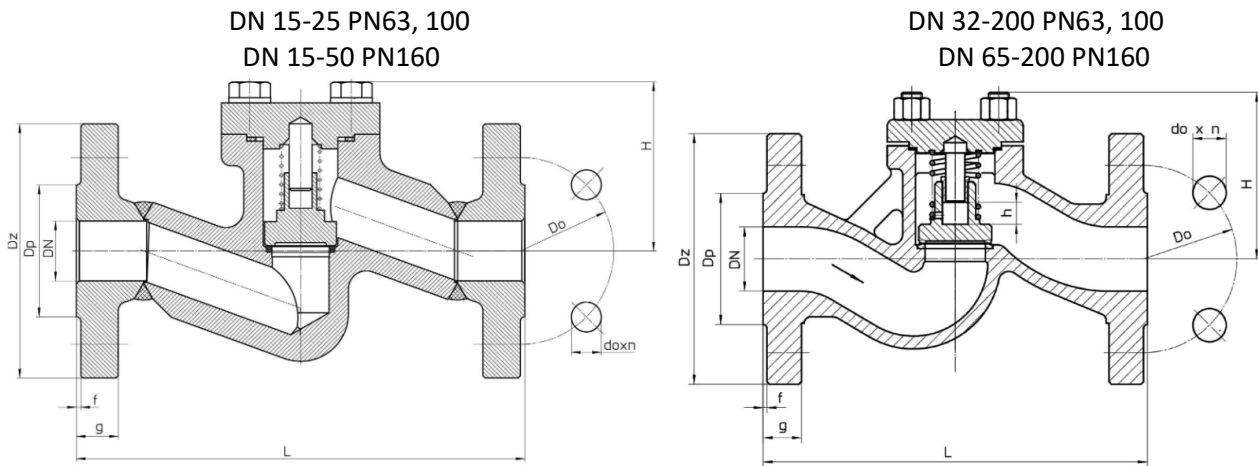


NEUTRAL  
FLUIDS

Data given can be changed without notice.

Edition 01/2021

**MATERIALS, DIMENSIONS**



	Body material	G	F	Q	Q
	Type	31	31	31	31
	PN	63 – 100 DN15-25 160 DN15-50	63 – 100 DN32-200 160 DN65-200	63 – 100 DN15-25 160 DN15-50	63 – 100 DN32-200 160 DN65-200
1	Body	P245GH	GP240GH	13CrMo4-5	G17CrMo5-5
2	Seat ring	18-8 CrNi			
3	Cover	P265GH		13CrMo4-5	
5	Seat disc	X20Cr13		13CrMo4-5	
6	Gasket	Grafit			
	Max. temperature	450°C			550°C

DN	15	20	25	40	50	32	40	50	65	80	100	150	200
	PN 63-160			PN 63-100		PN 63-160							
L (mm)	210	230	230	300	350	260	260	300	340	380	430	550	650
H (mm)	72	72	102	112	135	100	120	125	160	175	200	337	415
h (mm)	10	10	14	16	12	22	22	22	41	46	55	70	70
Weight (kg)	4,0	6,0	8,0	16	26,0	12,5	16,8	21,6	37,5	43,3	54,0	210,0	---

Data given can be changed without notice.

Edition 01/2021

ZETKAMA Sp. z o.o.  
Ul. 3 Maja 12  
PL 57-410 Ścinawka Średnia

Tel. +48 74 8652 193  
Tel. +48 74 8652 111  
Fax +48 74 8652 199

E-mail [export@zetskama.com.pl](mailto:export@zetskama.com.pl)  
[www.zetskama.com](http://www.zetskama.com)

**PRESSURE-TEMPERATURE RATINGS**

Material	PN	Temperature [° C]																		
		-10 < do <50	100	150	200	250	300	350	400	450	460	470	480	490	500	510	520	530	540	550
P245GH GP240 GH	63	63	58,5	55,5	52,5	48,0	43,5	40,5	37,5	20,7	-	-	-	-	-	-	-	-	-	-
	100	100	92,8	88,0	83,3	76,1	69,0	64,2	59,5	32,8	-	-	-	-	-	-	-	-	-	-
	160	160	137	130	124	113	103	97	91	47	-	-	-	-	-	-	-	-	-	-
13CrMo4-5 G17 CrMo 5-5	63	63	63	63	63	63	63	60,0	56,7	53,1	50,5	47,9	45,4	42,8	41,1	34,8	28,2	23,4	18,3	14,7
	100	100	100	100	100	100	100	95,2	90,0	84,2	80,2	76,1	72,0	68,0	65,2	55,2	44,7	37,1	29,0	23,3
	160	160	160	160	160	160	156	146	137	124	119	114	109	99	89	79	70	59	46	37

**FLANGE DIMENSIONS ACC. PN-EN 1092-1**

DN		15	20	25	32	40	50	65	80	100	150	200
PN63	D (mm)	105	130	140	155	170	180	205	215	250	345	415
	K (mm)	75	90	100	110	125	135	160	170	200	280	345
	nxd (mm)	14X4	18X4	18X4	22X4	22X4	22X4	22x8	22x8	26x8	33x8	36x12
PN100	D (mm)	105	130	140	155	170	195	220	230	265	355	430
	K (mm)	75	90	100	110	125	145	170	180	210	290	360
	nxd (mm)	14X4	18X4	18X4	22X4	22X4	26X4	26x8	26x8	30x8	33x12	36x12
PN160	D (mm)	105	130	140	155	170	195	220	230	265	355	430
	K (mm)	75	90	100	110	125	145	170	180	210	290	360
	nxd (mm)	14X4	18X4	18X4	22x4	22x4	26x4	26x8	26x8	30x8	33x12	36x12

Other type of valves on request:

- stellite seat
- hardened disc
- stellite disc
- other

Data given can be changed without notice.

Edition 01/2021

TYPE

Figure	Body material	Nominal diameter	Nominal pressure	Type
287	G forged steel P245GH	15-50 mm	H 160 bar	31 loose disc with spring; stem, disc and seat ring - stainless steel
		15-25 mm	G 100 bar	31 loose disc with spring; stem, disc and seat ring - stainless steel
		15-25 mm	F 63 bar	31 loose disc with spring; stem, disc and seat ring - stainless steel
	F cast steel GP240GH	65-200 mm	H 160 bar	31 loose disc with spring; stem, disc and seat ring - stainless steel
		32-200 mm	G 100 bar	31 loose disc with spring; stem, disc and seat ring - stainless steel
		32-200 mm	F 63 bar	31 loose disc with spring; stem, disc and seat ring - stainless steel
	Q alloy steel 13CrMo4-5	15-50 mm	H 160 bar	31 loose disc with spring; stem, disc and seat ring - stainless steel
		15-25 mm	G 100 bar	31 loose disc with spring; stem, disc and seat ring - stainless steel
		15-25 mm	F 63 bar	31 loose disc with spring; stem, disc and seat ring - stainless steel
	Q alloy steel G17CrMo5-5	65-200 mm	H 160 bar	31 loose disc with spring; stem, disc and seat ring - stainless steel
		32-200 mm	G 100 bar	31 loose disc with spring; stem, disc and seat ring - stainless steel
		32-200 mm	F 63 bar	31 loose disc with spring; stem, disc and seat ring - stainless steel

Data given can be changed without notice.

Edition 01/2021

**ORDERING**

Figure	Body material	Nominal diameter	Nominal pressure	Type
287	G forged steel P245GH	15-50 mm	H 160 bar	31 loose disc with spring; stem, disc and seat ring - stainless steel

Order example acc. index

287 G 050 H 31

Check valves, ends flanged, form straight  
 Forged steel P245GH  
 Nominal diameter (mm)  
 Nominal pressure PN 160  
 Loose disc with spring; stem, disc and seat ring - stainless steel

287  
 G  
 050  
 H  
 31

Data given can be changed without notice.

Edition 01/2021