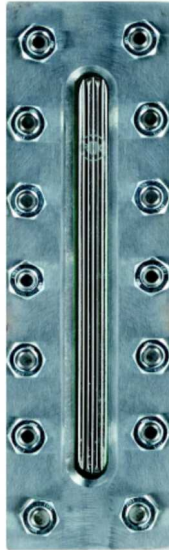


**LIQUID LEVEL GAUGE FOR WELDING zGAU**



Body material	Nominal pressure	Size	Max. temperature
<b>N</b> Carbon steel	<b>D</b> 25 bar	I-V	250°C
<b>M</b> Stainless steel	<b>D</b> 25 bar	I-V	250°C

**FEATURES**

- liquid level gauge is welded to vessel wall
- non standard length as an option

**APPLICATION \***

\* not all of the applications are suitable for all of the executions

industries



INDUSTRY



HEATING

media



DRINKING WATER



SEWAGE



NEUTRAL FLUIDS



INDUSTRIAL WATER

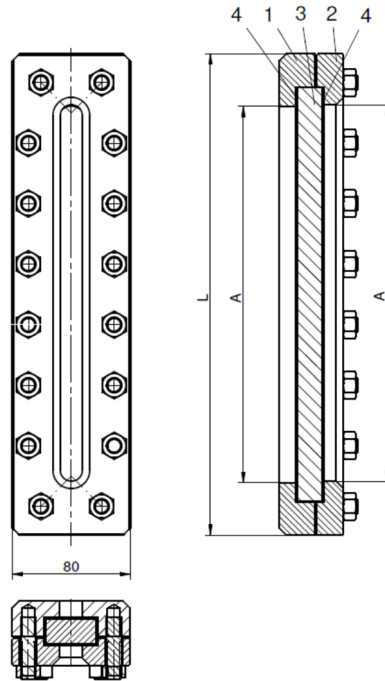


INDUSTRIAL OILS

Data given can be changed without notice.

Edition 01/2018

**MATERIALS, DIMENSIONS**



Body material		N	M
Type		01	01
1	Body	S275GR 1.0044	X6CrNiTi18-10 1.4541
2	Cover	S275GR 1.0044	X6CrNiTi18-10 1.4541
3	Glass	Glass	
5	Gasket	Graphite / AIFOIL	
Temperature range		250°C	250°C*

Body material	M, N (PN25)				
Type	01				
Size	I	II	III	IV	V
L (mm)	186	211	266	326	366
A (mm)	115	140	195	255	295
Glass dimensions	140x34x17	165x34x17	220x34x17	280x34x17	320x34x17
Weight[kg]	3,40	3,90	4,70	5,50	6,30

Other dimensions on request

Data given can be changed without notice.

Edition 01/2018

ZETKAMA Sp. z o.o.  
Ul. 3 Maja 12  
PL 57-410 Ścinawka Średnia

Tel. +48 74 8652 193  
Tel. +48 74 8652 111  
Fax +48 74 8652 199

E-mail [export@zetkama.com.pl](mailto:export@zetkama.com.pl)  
[www.zetkama.com](http://www.zetkama.com)

**PRESSURE-TEMPERATURE RATINGS**

Liquid level gauge 706 should to apply to devices, which pressure po and temperature to do not exceed the parameters passed in graph 1

	PN		-10	RT	50°C	100°C	150°C	200°C	250°C
S275GR	25	bar	20	20	20	20	18	16	14
X6CrNiTi18-10			20	20	20	20	18	16	14

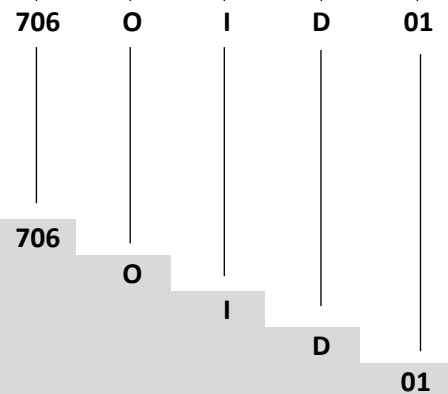
**TYPE**

Figure	Body material	Size	Nominal pressure	Type
706	N Carbon steel S275GR	I - V	D 25 bar	weld pad type 01
	M Stainless steel X6CrNiTi18-10	I - V	D 25 bar	weld pad type 01

**ORDERING**

Figure	Body material	Size	Nominal pressure	Type
706	N Carbon steel S275GR	I - V	D 25 bar	weld pad type 01

Order example acc. index



Liquid level gauge for welding, welded ends, straight form  
 Carbon steel  
 Size  
 Nominal pressure PN25  
 Weld pad type

Data given can be changed without notice.

Edition 01/2018