



Liquid level gauge with reflective or transparent glass zGAU



Body material	Nominal pressure	Size	Max. temperature
N Carbon steel	E 40 bar	0 - XI	300°C
Q Cast steel	E 40 bar	0 - XI	300°C
	F 63 bar	0 - XI	300°C
M Stainless steel	E 40 bar	0 - XI	300°C
	F 63 bar	0 - XI	250°C

FEATURES

- Compact design
- Multi-functionality
- Adaptable connections
- Different head versions depending on parameters and assembly method
- The liquid level gauge can be adapted to other lengths than standard ones
- In the version with flange connections, as standard, connecting flanges of the heads are drilled to PN40 as for DN20 and made with sealing surfaces type B1 with a spline according to PN EN 1092-1
- In the version with threaded connection - the 1/2" (GZ) threaded connection as a standard
- In the version with welded connections, it is possible to make the connection according to customer needs
- All liquid level gauges as standard equipped with anti-leakage protection in the event of glass breakage

APPLICATION*

* not all applications are suitable for all materials

industries	INDUSTRY	MARINE INDUSTRY	PETROCHEMISTRY	HEATING
	TAP WATER	SEWAGE	GLYCOL	PROCESS WATER

MATERIALS, DIMENSIONS

Subject to design changes

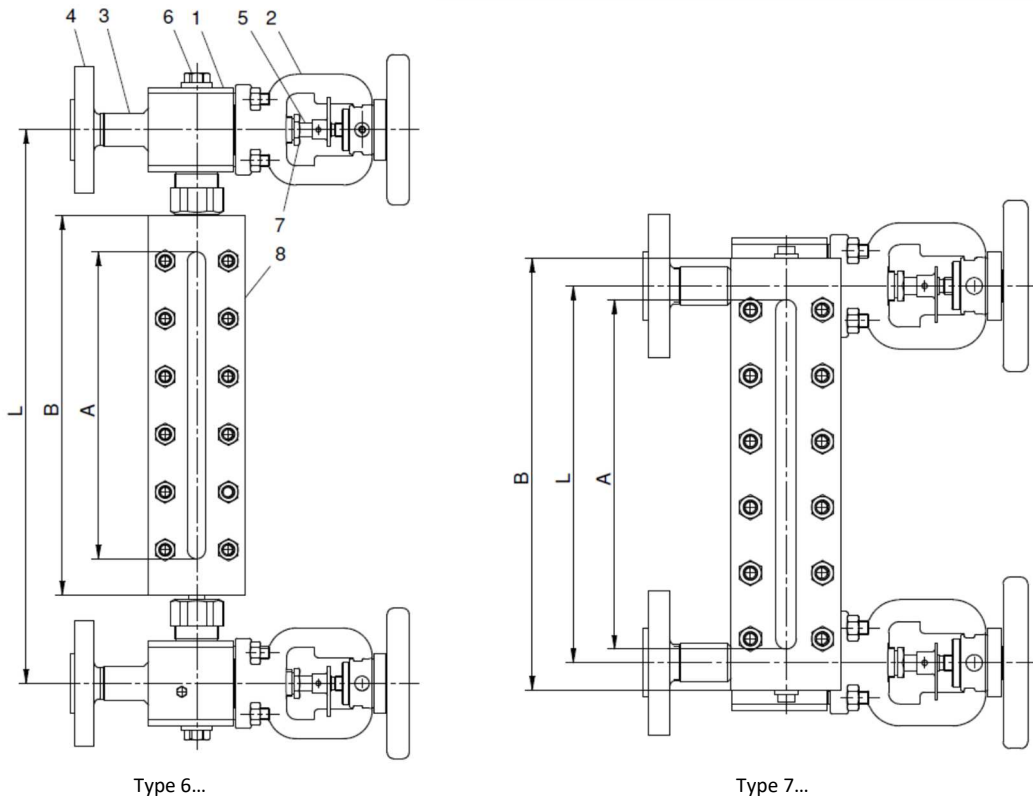
Issue 01/2018

ZETKAMA Sp. z o.o.
Ul. 3 Maja 12
PL 57-410 Ścinawka Średnia

Tel. +48 74 8652 187
Tel. +48 74 8652 111
Fax +48 74 8652 199

E-mail spkraj@zetskama.com.pl
www.zetskama.pl

FIG.716



Version with 708.1 head type

	Body material	N	Q	M
	Type	60, 61, 62, 63, 64, 65 70, 71, 72, 73, 74, 75	60, 61, 62, 63, 64, 65 70, 71, 72, 73, 74, 75	60, 61, 62, 63, 64, 65 70, 71, 72, 73, 74, 75
1	Liquid level gauge head	S235JR 1.0037	13CrMo4-5 1.7335	X6CrNiTi18-10 1.4541
2	Cover	GP240GH 1.0619		GX5CrNi19-10 1.4308
3	Tube	S235JR 1.0037	13CrMo4-5 1.7335	X6CrNiTi18-10 1.4541
4	Flange (60, 61, 70, 71)	S235JR 1.0037	13CrMo4-5 1.7335	X6CrNiTi18-10 1.4541
	Threaded end connection (62, 63, 72, 73)	S235JR 1.0037	13CrMo4-5 1.7335	316 1.4401
	End connection to be welded (64, 65, 74, 75)	S235JR 1.0037	13CrMo4-5 1.7335	X6CrNiTi18-10 1.4541
5	Pin	X20Cr13 1.4021		X6CrNiTiMo17-2-2 1.4571
6	½" plug	Carbon steel		X6CrNiTi18-10 1.4541
7	Gland	11SmN30 1.0715		X6CrNiTi18-10 1.4541
8	Liquid level gauge frame	S235JR / S275JR / C45	S235JR / S275JR / C45	X6CrNiTi18-10 1.4541
Temperature range		300°C	300°C	300°C

Connections:

Flange:

- DN15 – DN50 acc. to EN 1092-1

Subject to design changes

Issue 01/2018

FIG.716

- DN15 – DN50 ANSI #150, 300, 600

Other connection flanges after consultation with the manufacturer

Threaded:

- G1/2", G3/4", G1"

- NPT1/2", NPT3/4", NPT1"

Other threaded connections after consultation with the manufacturer

To be welded:

To be agreed with the manufacturer

Material	M, N, Q (PN40)																														
Type	60, 61, 62, 63, 64, 65																														
Size	0		I			II			III			IV		V			VI			VII			VIII			IX		X		XI	
	-	a	-	a	b	-	a	b	-	a	b	-	a	-	a	b	-	a	b	-	a	b	-	a	b	-	a	-	a	-	a
L (mm)	300	305	340	335	330	370	365	360	400	395	390	430	435	460	455	450	500	505	510	520	530	545	550	565	570	600	605	650	630	700	690
A (mm)	115		140			165			195			225		255			295			315			345			405		435		475	
B (mm)	152		177			202			232			262		292			332			352			382			442		472		512	
Glass size	140x34x17		165x34x17			190x34x17			220x34x17			250x34x17		280x34x17			320x34x17			340x34x17			370x34x17			430x34x17		460x34x17		500x34x17	
Weight [kg]	10,0		10,1			10,6			11,1			11,5		12,0			12,7			12,9			13,5			14,4		14,9		15,5	

NOTE: Other lengths after agreement with manufacturer, according to customer's requirements

Material	M, N, Q (PN40)											
Type	70, 71, 72, 73, 74, 75											
Size	I	II	III	IV	V	VI	VII	VIII	IX	X	XI	
L (mm)	160	185	215	245	275	315	335	365	425	455	495	
A (mm)	140	165	195	225	255	295	315	345	405	435	475	
B (mm)	200	225	255	285	315	355	375	405	465	495	535	
Glass size	165x34x17	190x34x17	220x34x17	250x34x17	280x34x17	320x34x17	340x34x17	370x34x17	430x34x17	460x34x17	500x34x17	
Weight [kg]	10,6	11,1	11,5	11,9	12,5	13,1	13,4	13,9	14,8	15,3	16,0	

NOTE: Other lengths after agreement with manufacturer, according to customer's requirements

Material	M, Q (PN63)																														
Type	60, 61, 62, 63, 64, 65																														
Size	0		I			II			III			IV		V			VI			VII			VIII			IX		X		XI	
	-	a	-	a	b	-	a	b	-	a	b	-	a	-	a	b	-	a	b	-	a	b	-	a	b	-	a	-	a	-	a
L (mm)	320	325	360	355	350	390	385	380	420	415	410	450	455	480	475	470	520	525	530	540	550	565	570	585	590	620	625	670	650	720	710
A (mm)	115		140			165			195			225		255			295			315			345			405		435		475	
B (mm)	172		197			222			252			282		312			352			372			402			462		492		532	
Glass size	140x34x17		165x34x17			190x34x17			220x34x17			250x34x17		280x34x17			320x34x17			340x34x17			370x34x17			430x34x17		460x34x17		500x34x17	
Weight [kg]	11,1		11,5			12,1			12,7			13,3		13,9			14,7			15,2			15,8			17,0		17,6		18,4	

NOTE: Other lengths after agreement with manufacturer, according to customer's requirements

Type 6... – maximum spacing – 4500 mm

Type 7... – maximum spacing – 3000 mm

Subject to design changes

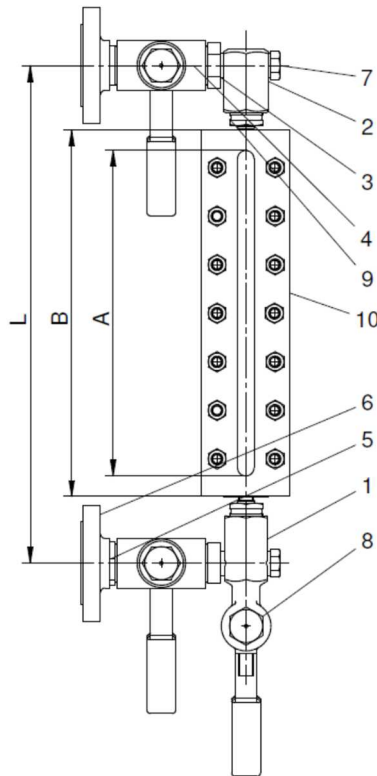
Issue 01/2018

ZETKAMA Sp. z o.o.
Ul. 3 Maja 12
PL 57-410 Ścinawka Średnia

Tel. +48 74 8652 187
Tel. +48 74 8652 111
Fax +48 74 8652 199

E-mail spkraj@zetskama.com.pl
www.zetskama.pl

FIG.716



	Body material	N	M
	Type	90, 91, 92, 93, 94, 95	
1	Drain cock housing	S275JR 1.044	X5CrNi18-10 1.4301
2	Upper gland connector	11SMn30 1.0715	X6CrNiTi18-10 1.4541
3	Valve nut	X20Cr13 1.4021	X6CrNiTi18-10 1.4541
4	Throttle valve	S235JR 1.0037	X6CrNiTi18-10 1.4541
5	Tube	S235JR 1.0037	X6CrNiTi18-10 1.4541
6	Flange	Carbon steel	Acid-resistant steel
7	Screw	11SMn30 1.0715	X6CrNiTi18-10 1.4541
8	Bolt	11SMn30 1.0715	X6CrNiTi18-10 1.4541
9	Nut	11SMn30 1.0715	X6CrNiTi18-10 1.4541
10	Frame	S235JR / S275JR / C45	X6CrNiTi18-10 1.4541
Temperature range		250°C	

Connections:

Flange:

DN15 – DN50 acc. to EN 1092-1, DN15 – DN50 ANSI #150, 300, 600
Other connection flanges after consultation with the manufacturer

Threaded:

G½", G¾", G1", NPT½", NPT¾", NPT1"

Other threaded connections after consultation with the manufacturer

To be welded:

To be agreed with the manufacturer

Subject to design changes

Issue 01/2018

Material	N, M (PN40)											
Type	90, 91, 92, 93, 94, 95											
Size	0	I	II	III	IV	V	VI	VII	VIII	IX	X	XI
L (mm)	280	300	320	350	380	410	450	470	500	560	590	630
A (mm)	115	140	165	195	225	255	295	315	345	405	435	475
B (mm)	152	177	202	232	262	292	332	352	382	442	472	512
Glass size	140x34x17	165x34x17	190x34x17	220x34x17	250x34x17	280x34x17	320x34x17	340x34x17	370x34x17	430x34x17	460x34x17	500x34x17
Weight [kg]	7,4	7,7	8,2	8,6	9,1	9,6	10,3	10,5	11,1	12,0	12,6	13,2

Type 9... – maximum spacing – 3000 mm

OPTIONS



Version with threaded connections
62, 63, 72, 73, 82, 83, 92, 93



Version with welding connection
64, 65, 74, 75, 84, 85, 94, 95



Possibility of using a measuring strip

Version with drain valve
For types 6 ..., 7 ...
The type depends on the parameters of the medium

PRESSURE-TEMPERATURE RATINGS

	PN		-10	RT	50 °C	100 °C	150 °C	200 °C	250 °C	300 °C
S275JR	40	bar	30	40	40	40	36	32	28	
S235JR			30	40	40	40	36	32	28	23,8
13CrMo4-5			40	40	40	40	40	40	40	40
X6CrNiTi18-10			38	38	35,6	27,6	24,9	22,6	21	19,6
13CrMo4-5	63		63	63	63	63	63	63	63	63
X6CrNiTi18-10			55	63	63	62,4	58,8	55,8	53,1	

Subject to design changes

Issue 01/2018

ZETKAMA Sp. z o.o.
Ul. 3 Maja 12
PL 57-410 Ścinawka Średnia

Tel. +48 74 8652 187
Tel. +48 74 8652 111
Fax +48 74 8652 199

E-mail spkraj@zetskama.com.pl
www.zetskama.pl

TYPES

Figure	Body material	Size	Nominal pressure	Type		
716	N Carbon steel S235JR	0 - XI	E 40 bar	60 Liquid level gauge with central frame with 708.1 head, with reflective glass, with flange connection		
		0 - XI	E 40 bar	61 Liquid level gauge with central frame with 708.1 head, with transparent glass, with flange connection		
		0 - XI	E 40 bar	62 Liquid level gauge with central frame with 708.1 head, with reflective glass, with threaded connection		
		0 - XI	E 40 bar	63 Liquid level gauge with central frame with 708.1 head, with transparent glass, with threaded connection		
		0 - XI	E 40 bar	64 Liquid level gauge with central frame with 708.1 head, with reflective glass, with welding connection		
		0 - XI	E 40 bar	65 Liquid level gauge with central frame with 708.1 head, with transparent glass, with welding connection		
		I - XI	E 40 bar	70 Liquid level gauge with side frame, with reflective glass, with flange connection		
		I - XI	E 40 bar	71 Liquid level gauge with side frame, with transparent glass, with flange connection		
		I - XI	E 40 bar	72 Liquid level gauge with side frame, with reflective glass, with threaded connection		
		I - XI	E 40 bar	73 Liquid level gauge with side frame, with transparent glass, with threaded connection		
		I - XI	E 40 bar	74 Liquid level gauge with side frame, with reflective glass, with welding connection		
		I - XI	E 40 bar	75 Liquid level gauge with side frame, with transparent glass, with welding connection		
		0 - XI	E 40 bar	90 Liquid level gauge with central frame, with reflective glass, with flange connection		
		0 - XI	E 40 bar	91 Liquid level gauge with central frame with 708.3 head, with transparent glass, with flange connection		
		0 - XI	E 40 bar	92 Liquid level gauge with central frame with 708.3 head, with reflective glass, with threaded connection		
		0 - XI	E 40 bar	93 Liquid level gauge with central frame with 708.3 head, with transparent glass, with threaded connection		
		0 - XI	E 40 bar	94 Liquid level gauge with central frame, with reflective glass, with welding connection		
		0 - XI	E 40 bar	95 Liquid level gauge with central frame, with transparent glass, with welding connection		
		716	Q Cast steel 13CrMo4-5	0 - XI	E 40 bar	60 Liquid level gauge with central frame with 708.1 head, with reflective glass, with flange connection
				0 - XI	E 40 bar	61 Liquid level gauge with central frame with 708.1 head, with transparent glass, with flange connection
0 - XI	E 40 bar			62 Liquid level gauge with central frame with 708.1 head, with reflective glass, with threaded connection		
0 - XI	E 40 bar			63 Liquid level gauge with central frame with 708.1 head, with transparent glass, with threaded connection		
0 - XI	E 40 bar			64 Liquid level gauge with central frame with 708.1 head, with reflective glass, with welding connection		

Subject to design changes

Issue 01/2018

FIG.716

		0 - XI	E 40 bar	65 Liquid level gauge with central frame with 708.1 head, with transparent glass, with welding connection
		I - XI	E 40 bar	70 Liquid level gauge with side frame, with reflective glass, with flange connection
		I - XI	E 40 bar	71 Liquid level gauge with side frame, with transparent glass, with flange connection
		I - XI	E 40 bar	72 Liquid level gauge with side frame, with reflective glass, with threaded connection
		I - XI	E 40 bar	73 Liquid level gauge with side frame, with transparent glass, with threaded connection
		I - XI	E 40 bar	74 Liquid level gauge with side frame, with reflective glass, with welding connection
		I - XI	E 40 bar	75 Liquid level gauge with side frame, with transparent glass, with welding connection
716	Q Cast steel 13CrMo4-5	0 - XI	F 63 bar	60 Liquid level gauge with central frame, with reflective glass, with flange connection
		0 - XI	F 63 bar	61 Liquid level gauge with central frame, with transparent glass, with flange connection
		0 - XI	F 63 bar	62 Liquid level gauge with central frame, with reflective glass, with threaded connection
		0 - XI	F 63 bar	63 Liquid level gauge with central frame, with transparent glass, with threaded connection
		0 - XI	F 63 bar	64 Liquid level gauge with central frame, with reflective glass, with welding connection
		0 - XI	F 63 bar	65 Liquid level gauge with central frame, with transparent glass, with welding connection
716	M Stainless steel X6CrNiTi18-10	0 - XI	E 40 bar	60 Liquid level gauge with central frame with 708.1 head, with reflective glass, with flange connection
		0 - XI	E 40 bar	61 Liquid level gauge with central frame with 708.1 head, with transparent glass, with flange connection
		0 - XI	E 40 bar	62 Liquid level gauge with central frame with 708.1 head, with reflective glass, with threaded connection
		0 - XI	E 40 bar	63 Liquid level gauge with central frame with 708.1 head, with transparent glass, with threaded connection
		0 - XI	E 40 bar	64 Liquid level gauge with central frame with 708.1 head, with reflective glass, with welding connection
		0 - XI	E 40 bar	65 Liquid level gauge with central frame with 708.1 head, with transparent glass, with welding connection
		I - XI	E 40 bar	70 Liquid level gauge with side frame, with reflective glass, with flange connection
		I - XI	E 40 bar	71 Liquid level gauge with side frame, with transparent glass, with flange connection
		I - XI	E 40 bar	72 Liquid level gauge with side frame, with reflective glass, with threaded connection
		I - XI	E 40 bar	73 Liquid level gauge with side frame, with transparent glass, with threaded connection
		I - XI	E 40 bar	74 Liquid level gauge with side frame, with reflective glass, with welding connection
		I - XI	E 40 bar	75 Liquid level gauge with side frame, with transparent glass, with welding connection
		0 - XI	E 40 bar	90 Liquid level gauge with central frame with 708.3 head, with reflective glass, with flange connection

Subject to design changes

Issue 01/2018

FIG.716

		0 - XI	E 40 bar	91	Liquid level gauge with central frame with 708.3 head, with transparent glass, with flange connection
		0 - XI	E 40 bar	92	Liquid level gauge with central frame with 708.3 head, with reflective glass, with threaded connection
		0 - XI	E 40 bar	93	Liquid level gauge with central frame with 708.3 head, with transparent glass, with threaded connection
		0 - XI	E 40 bar	94	Liquid level gauge with central frame, with reflective glass, with welding connection
		0 - XI	E 40 bar	95	Liquid level gauge with central frame, with transparent glass, with welding connection
716	M Acid-resistant steel X6CrNiTi18-10	0 - XI	F 63 bar	60	Liquid level gauge with central frame, with reflective glass, with flange connection
		0 - XI	F 63 bar	61	Liquid level gauge with central frame, with transparent glass, with flange connection
		0 - XI	F 63 bar	62	Liquid level gauge with central frame, with reflective glass, with threaded connection
		0 - XI	F 63 bar	63	Liquid level gauge with central frame, with transparent glass, with threaded connection
		0 - XI	F 63 bar	64	Liquid level gauge with central frame, with reflective glass, with welding connection
		0 - XI	F 63 bar	65	Liquid level gauge with central frame, with transparent glass, with welding connection

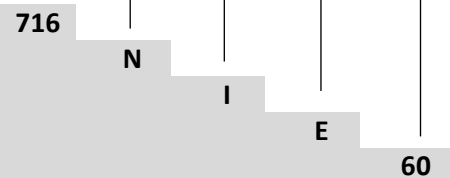
ORDERING

Figure	Body material	Size	Nominal pressure	Type
716	N Carbon steel S235JR	0 - XI	E 40 bar	60 Liquid level gauge with central frame with 708.1 head, with reflective glass, with flange connection

Order example acc. to the index

716 N I E 60

zGAU liquid level gauge with reflective or transparent glass
 Carbon steel
 Size
 PN40 nominal pressure
 Type with central frame with 708.1 head, with reflective glass, with flange connection



Subject to design changes

Issue 01/2018